

Scoil na Croise Naofa
Geashill NS
Geashill, Co. Offaly, R35 W253.
057 9343754
geashillnsoffice@gmail.com
www.geashillns.ie
Roll No. 09191I
Registered Charity No. 20204543

Principal: Mícheál Hyland

Deputy Principal: Marie Kearns

17th August 2020

Dear Parents,

In this letter I will set out our arrangements for a staggered morning drop off and evening pick up. I will also give a short update on school uniforms.

We are doing this to comply with the guidelines in the Covid-19 Response Plan for the Safe Reopening of Primary Schools. Read below the section from these guidelines dealing with school drop off and collection.

School drop off/collection

Arrangements for dropping off/collecting pupils should be arranged to encourage physical distancing of 2m where possible.

Walking/cycling to school should be encouraged as much as possible.

Arrangements should be made to maintain a distance of 2m between parents and guardians and between parents and guardians and school staff.

Aim of any arrangements is to avoid congregation of people at the school gates where physical distancing may not be respected.

Staggered drop off/pick up times should be considered where practical and feasible.

If schools have additional access points, consideration may be given to whether they can be used to reduce congestion.

Consideration may be given to where pupils congregate as they arrive at school. This could include heading straight to their small group designated learning space/classroom.

Our Arrangements for Morning Drop off and Evening Pick Up

On arrival children will go directly to their classrooms via their designated entry point.

Pupils should only be dropped at the school during their designated drop off slot. **No children can be dropped to school before 9am.**

Staff will be at the drop off points to guide children to their entry doors.

I'm sure after a day or two the children will know their routes very well.

To allow this new system to work efficiently, it is important that drop off and pick up are done both quickly and safely while at all times adhering to 2m distance as per government guidelines.

We will keep this new system under review and changes may be made if necessary.

Our specific arrangements can be seen on the next few pages.

When reading them look for the class your oldest child is in. There you will see the time and drop off/pick up point for all your children.

There is a map of the school showing drop off/pick up points and the colour coded entry/exit doors at the end of this document.

Parents of Junior Infants please note that you will have specific times sent to you for both drop off and pick up on September 1st. For the rest of the first week Junior Infants are to follow the morning timetable below and are to be collected at 12 midday.

School Uniforms

The government guidelines indicate that there are no public health concerns with the wearing of school uniforms. Therefore uniforms should be worn as usual and kept as clean as possible.

Once again, if you have any question or query about anything to do with going back to school please contact me by emailing geashillnsoffice@gmail.com or by calling 057 9343754.

I will be in touch again soon.

Yours Sincerely,

Mícheál Hyland

Remember, only look for the class your oldest child is in. That is the time all your children should be dropped to school.

Morning Timetable

9:00 – 9:10	9:10 – 9:20	9:20-9:30
<p>6th Class + siblings</p>	<p>4th & 5th Classes + siblings</p>	<p>2nd & 3rd Classes + siblings</p>
<p>By Car Drop Off 2 (Front Gate) Entry Door 6th- Red Snr Inf. To 5th Class- Green Junior Inf.- Purple</p>	<p>By Car Drop Off 4 (Small Gate at the Green) Entry Door Snr Inf.to 5th Class- Orange Junior Inf.- Purple</p>	<p>By Car Drop Off 4 (Small Gate at the Green) Entry Door Snr Inf. to 3rd Class- Orange Junior Inf.- Purple</p>
<p>Walking Anyone walking from the St. Oliver’s Est. side of the village Drop Off 1 (small gate at New Main Entrance) Entry Door 6th – Red Snr Inf. To 5th Class- Blue Jnr Inf. - Purple</p> <p>Anyone walking from the Traffic Lights’ side of the village enter through Drop Off 3 (Stile in front of the Old Schoo) Entry Door 6th – Red Snr Inf. to 5th Class- Orange Jnr Inf. - Purple</p>	<p>Walking Anyone walking from the St. Oliver’s Est. side of the village Drop Off 1 (small gate at New Main Entrance) Entry Door Snr Inf. to 5th Class- Blue Jnr Inf. - Purple</p> <p>Anyone walking from the Traffic Lights’ side of the village enter through Drop Off 3 (Stile in front of the Old School) Entry Door Snr Inf. to 5th Class- Orange Jnr Inf. - Purple</p>	<p>Walking Anyone walking from the St. Oliver’s Est. side of the village Drop Off 1 (small gate at New Main Entrance) Entry Door Snr Inf. to 3rd Class- Blue Jnr Inf. - Purple</p> <p>Anyone walking from the Traffic Lights’ side of the village enter through Drop Off 3 (Stile in front of the Old School) Entry Door Snr Inf. to 5th Class- Orange Jnr Inf. - Purple</p>

	9:10 – 9:20	9:20 – 9:30
Cairdeas 1 & 2	Senior Infants & 1st Classes + siblings	Junior Infants
<p>Pupils in Cairdeas 1 & 2 will be met at the bus/car by an SNA at Drop Off 2 (front of the school). The Bus Escort will remain in the bus. Pupils will be brought to the classrooms once they arrive.</p> <p><u>Entry Door</u> Cairdeas 1 – Yellow</p> <p>Cairdeas 2 - Green</p>	<p>By Car Drop Off 2 (Front Gate)</p> <p><u>Entry Door</u> Senior Infants & 1st Classes – Green Junior Infants- Purple</p>	<p>By Car Drop Off 2 (Front of the School)</p> <p><u>Entry Door</u> Junior Infants - Purple</p>
	<p>Walking Anyone walking from the St. Oliver’s Est. side of the village Drop Off 1 (small gate at New Main Entrance)</p> <p><u>Entry Door</u> Senior Infants & 1st Classes – Blue Junior Infants- Purple</p> <p>Anyone walking from the Traffic Lights’ side of the village enter through Drop Off 3 (Stile in front of the Old School)</p> <p><u>Entry Door</u> Senior Infants & 1st Classes – Orange Junior Infants- Purple</p>	<p>Walking Anyone walking from the St. Oliver’s Est. side of the village Drop Off 1 (small gate at New Main Entrance)</p> <p><u>Entry Door</u> Junior Infants- Purple</p> <p>Anyone walking from the Traffic Lights’ side of the village enter through Drop Off 3 (Stile in front of the Old School)</p> <p><u>Entry Door</u> Junior Infants- Purple</p>

Infants go home at the times shown. For parents of children in all other classes remember to look at the class of your oldest child.

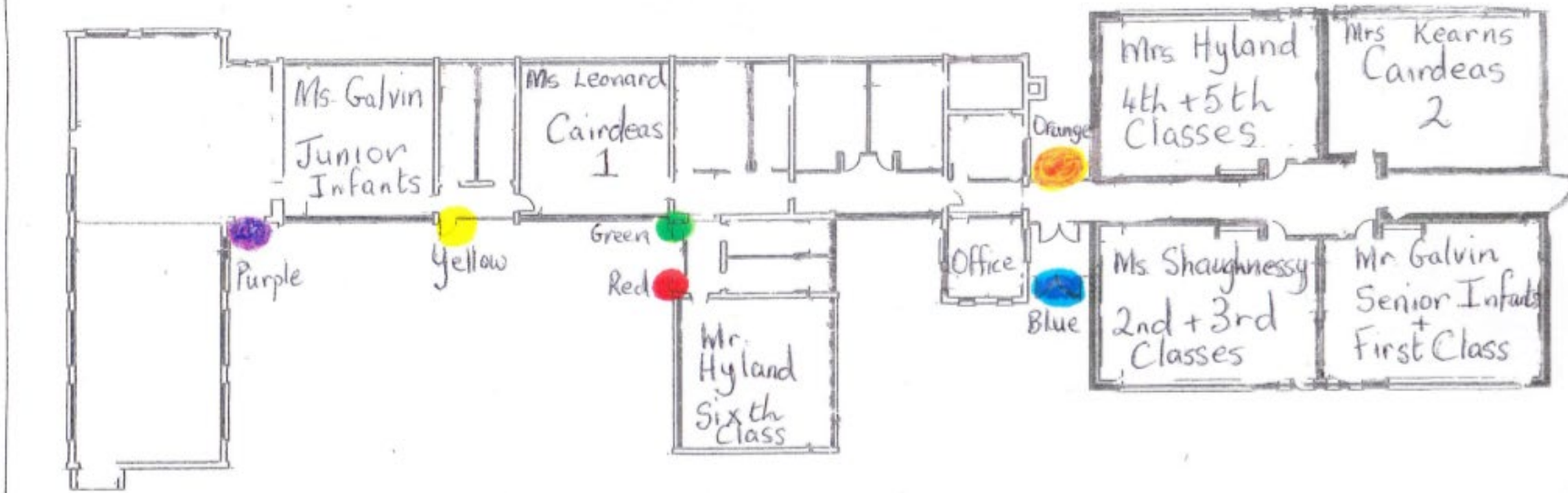
Evening Timetable

1:55	2:05	2:50	2:55
Junior Infants	Senior Infants	6th Class + siblings	4th & 5th Classes + younger siblings
<p>By Car Pick Up 2 (Front of the School)</p> <p>Exit Door Junior Infants – Purple Senior Infants - Green</p>	<p>By Car Pick Up 2 (Front Gate)</p> <p>Exit Door 6th - Red Snr Inf.to 5th Class– Green</p>	<p>By Car Pick Up 4 (Small Gate at the Green)</p> <p>Exit Door 1st to 5th Class– Orange</p>	
<p>Walking Anyone walking to the St. Oliver’s Est. side of the village Pick Up 1 (small gate at New Main Entrance)</p> <p>Exit Door Junior Infants- Purple Senior Infants- Blue</p>	<p>Walking Anyone walking to the St. Oliver’s Est. side of the village Pick Up 1 (small gate at New Main Entrance)</p> <p>Exit Door 6th – Red 1st to 5th Class– Blue</p>	<p>Walking Anyone walking to the St. Oliver’s Est. side of the village Pick Up 1 (small gate at New Main Entrance)</p> <p>Exit Door 1st to 5th Class– Blue</p>	
<p>Anyone walking to the Traffic Lights’ side of the village exit through Pick Up 3 (Stile in front of the Old School)</p> <p>Exit Door Junior Infants- Purple Senior Infants- Green</p>	<p>Anyone walking to the Traffic Lights’ side of the village exit through Pick Up 3 (Stile in front of the Old School)</p> <p>Exit Door 6th – Red 1st to 5th Class– Orange</p>	<p>Anyone walking to the Traffic Lights’ side of the village exit through Pick Up 3 (Stile in front of the Old School)</p> <p>Exit Door 1st to 5th Class– Orange</p>	

3:00	3:00	3:05
2 nd & 3 rd Classes + younger siblings	1 st Class	Cairdeas 1 & 2
<p>By Car Pick Up 4 (Small Gate at the Green) Exit Door 1st to 3rd Classes– Orange</p>	<p>By Car Pick Up 2 (Front Gate) Exit Door 1st Class – Green</p>	<p>Pupils in Cairdeas 1 & 2 will be brought to the bus/car by an SNA at Pick Up 2 (front of the school). The Bus Escort will remain in the bus/car. Exit Door Cairdeas 1 – Yellow Cairdeas 2 - Green</p>
<p>Walking Anyone walking to the St. Oliver’s Est. side of the village Pick Up 1 (small gate at New Main Entrance) Exit Door 1st to 3rd Classes– Blue</p> <p>Anyone walking to the Traffic Lights’ side of the village exit through Pick Up 3 (Stile in front of the Old School) Exit Door 1st to 3rd Classes– Orange</p>	<p>Walking Anyone walking to the St. Oliver’s Est. side of the village Pick Up 1 (small gate at New Main Entrance) Exit Door 1st Class – Blue</p> <p>Anyone walking to the Traffic Lights’ side of the village exit through Pick Up 3 (Stile in front of the Old School) Exit Door 1st Class – Orange</p>	

School Map

Small Gate at
The Green
Drop-Off 4
←



Drop-off 3
stile in front
of Old School

Drop-Off 2
Front Gate

Drop-Off 1
Small Gate